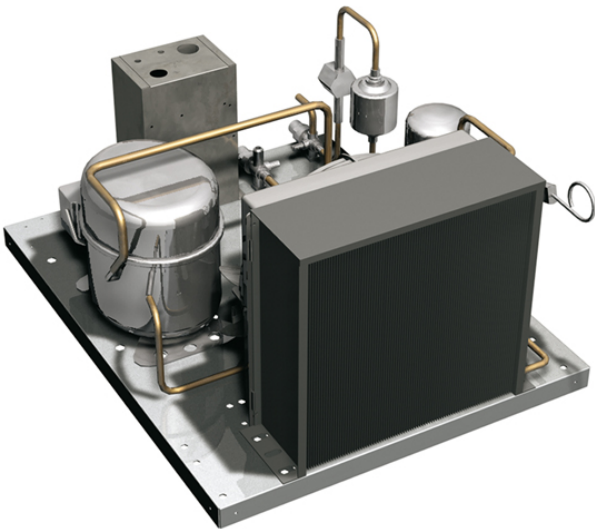


# GR70AL

## REMOTE COOLING UNIT -2°C ÷ +8°C

Cooling unit suitable for remote installation. To be installed at a maximum distance of 25 pipes linear meter, in a technical compartment or outside with protection. Air cooled. To fill with refrigerant fluid R134a.



### Technical features

Refrigeration power at -10°C W	686
Frequency/voltage	230V 1N~ / 50Hz
Electric power, kW	0,54

### Dimensions and weights

Packing (LxDxH), cm	64x75x77
Dimensions (LxDxH), cm	48x60x30
Gross Weight (kg)	29
Net Weight (kg)	28

REMOTE COOLING UNIT -2°C ÷ +8°C

