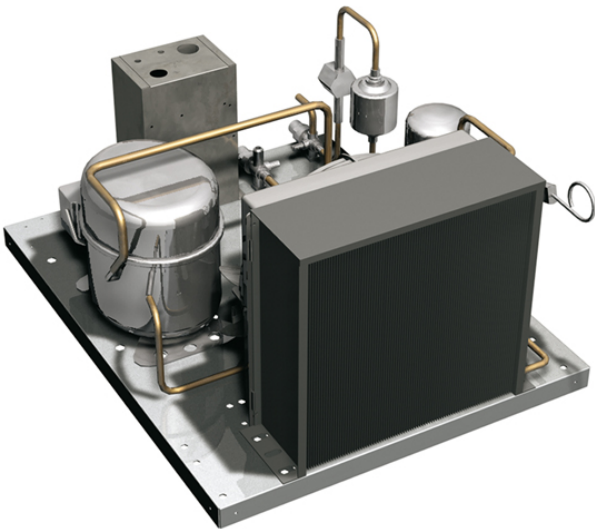


GR70AB

REMOTE COOLING UNIT -20°C ÷ -10°C

Cooling unit suitable for remote installation. To be installed at a maximum distance of 25 pipes linear meter, in a technical compartment or outside with protection. Air cooled. To fill with refrigerant fluid R404A or R452A.



Technical features

| | |
|-------------------------------|-----------------|
| Refrigeration power -23,3°C W | 802 |
| Frequency/voltage | 230V 1N~ / 50Hz |
| Electric power, kW | 0,68 |

Dimensions and weights

| | |
|------------------------|----------|
| Packing (LxDxH), cm | 54x64x37 |
| Dimensions (LxDxH), cm | 48x60x33 |
| Gross Weight (kg) | 35 |
| Net Weight (kg) | 32 |

REMOTE COOLING UNIT -20°C ÷ -10°C

