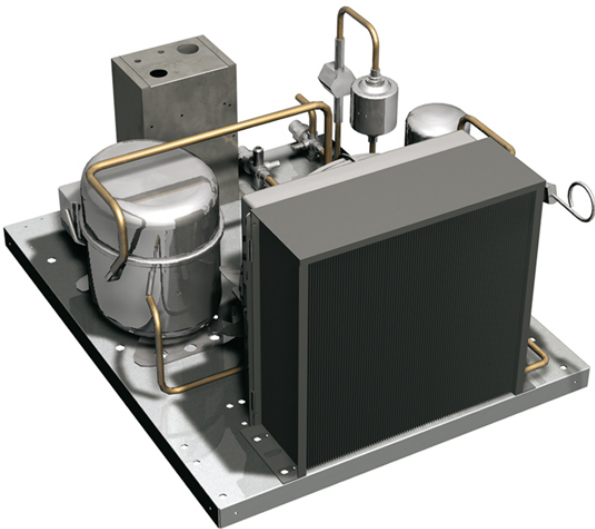


GR150AL

REMOTE COOLING UNIT -2°C ÷ +8°C

Cooling unit suitable for remote installation. To be installed at a maximum distance of 25 pipes linear meter, in a technical compartment or outside with protection. Air cooled. To fill with refrigerant fluid R134a.



Technical features

Refrigeration power at -10°C W	914
Frequency/voltage	230V 1N~ / 50Hz
Electric power, kW	0,75

Dimensions and weights

Packing (LxDxH), cm	50x62x36
Dimensions (LxDxH), cm	48x60x31
Gross Weight (kg)	28,5
Net Weight (kg)	25

REMOTE COOLING UNIT -2°C ÷ +8°C

