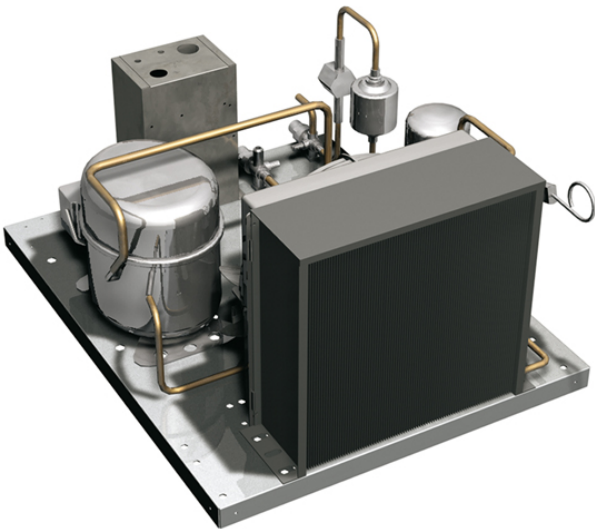


# GR150AB

## REMOTE COOLING UNIT -20°C ÷ -10°C



Cooling unit suitable for remote installation. To be installed at a maximum distance of 25 pipes linear meter, in a technical compartment or outside with protection. Air cooled. To fill with refrigerant fluid R404A or R452A.



### Technical features

Refrigeration power -23,3°C W	1546
Frequency/voltage	230V 1N~ / 50Hz
Electric power, kW	1,6

### Dimensions and weights

Packing (LxDxH), cm	64x75x77
Dimensions (LxDxH), cm	48x60x35
Gross Weight (kg)	30
Net Weight (kg)	27

REMOTE COOLING UNIT -20°C ÷ -10°C

